



# Plugged in to Altamaha EMC | Fiber

Serving: Toombs, Montgomery, Emanuel, Treutlen, Laurens, Johnson and Tattnall

## Local Students Shine in Area 4 FFA Wiring Contest

In a display of skill and dedication, local students recently showcased their talent in the Area 4 FFA Wiring Contest sponsored by the Electric Membership Corporations (EMCs) of Georgia, including Altamaha EMC/Fiber.

Among the standout participants were Evan Hardeman of Montgomery County High School, Dawson McLendon of Toombs County High School, Chestin Collins of Treutlen County High School, and Caleb Long from Swainsboro High School. These students demonstrated exceptional prowess in electrical wiring and problem-solving, showcasing the bright future of the electrical industry.

Caleb Long emerged as the champion, securing the coveted 1st place at the competition. His outstanding performance earned him a ticket to advance to the state competition, where he will represent not only his school but also the

remarkable talent present in Area 4. The wiring contest features three primary components designed to test the students' skills:

### **Practical Wiring Exercise:**

Participants were tasked with executing practical wiring tasks, demonstrating their proficiency in hands-on electrical work.

### **Problem-Solving Exercise:**

A critical aspect of the competition involved students interpreting and applying the National Electric Code (NEC) to solve complex electrical problems.

### **Speech Demonstration**

**Activity:** Beyond technical expertise, students were also evaluated on their communication skills through a speech demonstration. Effective communication is paramount in the field of electrical work, as professionals often need to convey technical information clearly to clients, colleagues, and stakeholders.

The support and sponsorship



*Student Caleb Long,  
Teacher Ashley Henry*

provided by the Electric Membership Corporations of Georgia, including Altamaha EMC/Fiber, are instrumental in making such events possible. By investing in the development of local talent and promoting excellence in electrical education, these organizations contribute significantly to the advancement of the industry and the communities they serve.



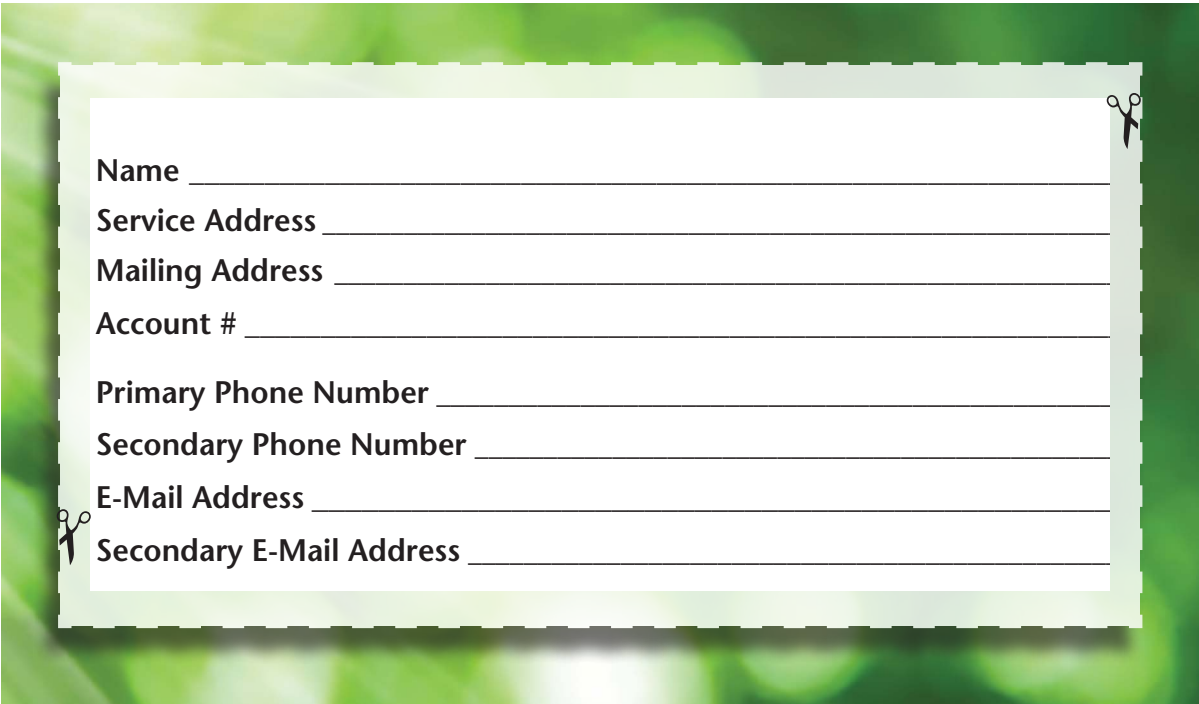
*Student Chestin Collins, Teacher  
Michael Atkinson*



*Student Evan Hardeman, Teacher  
Brittany Braddy*



*Student Dawson McLendon,  
Teacher Chastity Knight*



Name \_\_\_\_\_

Service Address \_\_\_\_\_

Mailing Address \_\_\_\_\_

Account # \_\_\_\_\_

Primary Phone Number \_\_\_\_\_

Secondary Phone Number \_\_\_\_\_

E-Mail Address \_\_\_\_\_

Secondary E-Mail Address \_\_\_\_\_

# Help Us Enhance Your Co-op Experience: Update Your Contact Information Today!

At Altamaha EMC, we are dedicated to delivering the highest standard of electric and fiber service to our valued members – and you play a crucial role in helping us achieve that goal. In our ongoing pursuit of operational efficiency, we rely heavily on data for every facet of our operations. This is why we need your assistance in ensuring we have the most accurate and complete contact information for you.

Your precise contact details enable us to elevate our customer service, streamline communication for reporting and repairing outages, and keep you informed about important programs, events, and activities. Additionally, having up-to-date information can significantly expedite the power restoration process during outages.

For instance, the phone number you provide links directly to our outage management system. When you call to report an outage, our system recognizes your phone number and swiftly identifies your account location. This accuracy empowers our outage management system to predict the outage’s location and potential cause, facilitating our crews in promptly correcting the issue.

While we consistently strive to maintain uninterrupted service, planned outages are sometimes necessary for equipment updates, repairs, or replacements. By having your updated contact information and communication preferences, we can provide advance notification through automated phone messages, text messages, or email, ensuring you stay informed.

Signing up for text and/or email alerts not only allows us to notify you about due dates, payment notifications, and usage alerts but also helps us stay in touch regarding issues related to payments, energy use, or billing. We understand that many of you now use a cell phone as your primary phone service, and we want to ensure we have the most current and relevant information in our system.

Rest assured, we prioritize the security of your information. Altamaha EMC will never share your contact details with any third parties. Your information is solely used by us to send crucial updates and information directly to you.

Take a moment today to confirm or update your contact information by calling our office at 912-526-8181. By doing so, you are not just updating data; you are actively contributing to the improvement of our service and efficiency, enabling us to better serve you.

*Thank you for your cooperation and continued partnership in making Altamaha EMC the best it can be.*

# Your Pennies at Work:

## Operation Round-Up Making a Difference

At the December meeting, the Altamaha EMC Foundation continued its steadfast commitment to community growth and empowerment by awarding impactful grants through Operation Round Up. These grants, totaling \$5,500, exemplify our dedication to investing in the future of our community and workforce.

### Investing in Education: Southeastern Technical College Foundation

We proudly awarded \$2,500 to the Southeastern Technical College Foundation, reinforcing our commitment to ensuring access to education for all. This contribution will directly assist students in covering tuition costs, particularly those facing financial barriers. By supporting the educational pursuits of our community members, we are investing in a brighter future for both individuals and the collective well-being of our community.

### Empowering Agricultural Education: Toombs County Young Farmers Program

In line with our dedication to nurturing the agricultural sector and supporting our farming community, we donated \$3,000 to the Toombs County Young Farmers Program. This initiative is a vital component of Georgia's Agricultural Education program, offering educational seminars and classes on a wide range of topics crucial to modern agriculture. From agricultural technology to legislative issues affecting the industry, the program equips farmers with essential knowledge and skills to thrive in today's agricultural landscape.

The Toombs County Young Farmers Program, facilitated by Kasey Jackson, provides invaluable on-site technical assistance and instruction. Through organized classes and seminars, farmers gain insights into new farming techniques, risk management strategies, water management, and agricultural awareness. This holistic approach not only enhances individual farming practices but also contributes to the overall resilience and sustainability of our agricultural community.

Through Operation Round Up, your spare change is making a tangible difference in the lives of our neighbors and the future of our community. Together, we are building a stronger, more vibrant community where education and agriculture thrive. Thank you for your continued support and contributions to Operation Round Up. With your pennies at work, we are creating lasting impact and driving positive change in our community.

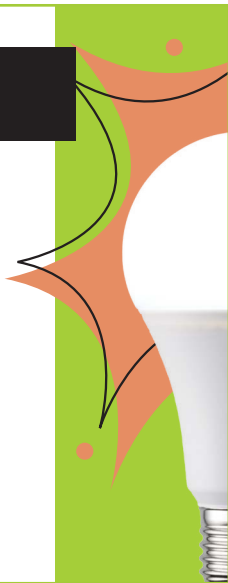


## ENERGY EFFICIENCY

### TIP OF THE MONTH

Lengthen the life of your clothes dryer with regular cleaning. Clean the lint filter after every load, which improves air circulation and safety. Check the lint trap opening to ensure it's clean. Use a vacuum to remove any lint that's fallen inside the opening.

If you use dryer sheets, check the lint filter for residue buildup. Remove any residue with hot water and a nylon brush or toothbrush. Over time, dryer sheets can leave a film on the filter, which can affect the performance of the motor.

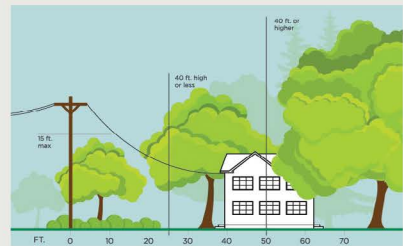




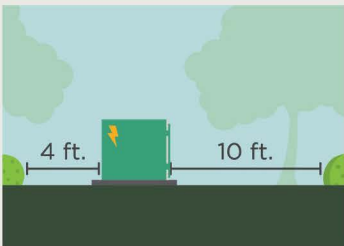
# 3 Ways to Help Limit Tree Trimming

Did you know electric utilities are required to trim trees and other types of vegetation that grow too close to overhead power lines? We know you love your trees, and we will do everything we can to avoid trimming them. Here's how you can help:

**1. Plant trees in the right place.** Trees that will be <40 ft. should be planted at least 25 ft. away from power lines (>40ft. should be at least 50 ft. away).



**2. Don't block pad-mounted transformers.** Plant shrubs at least 10 ft. away from transformer doors and 4 ft. from transformer sides.



**3. Report dangerous branches.** If you spot a tree or branch that is dangerously close to power lines, please let us know.



**Trimming improves safety for all.**  
**Let's work together to enjoy the beauty of trees and reliable electricity.**

## Holiday Closure Announcement

Altamaha EMC/Fiber offices will be closed on Friday, March 29, in observance of Good Friday. While our offices will be closed, payment kiosks at all four locations will remain accessible for any payments. In the event of a power outage or related issues, standby personnel will be available. To report power outages, please call (912) 526-8181. We appreciate your understanding.



**ALTAMAHA**  
EMC | FIBER





# Member RECIPES

## Juicy Bundt Cake

### CAKE INGREDIENTS

15.25 oz. box yellow cake mix (or Butter mix)

3/4 cup vegetable oil

3/4 cup pineapple juice

4 eggs

### GLAZE INGREDIENTS

2 cups powdered sugar

3/4 cup pineapple juice

4 tablespoons butter

### DIRECTIONS:

Preheat oven to 325°F. Grease and flour well a 10 to 12-cup Bundt pan. Using electric mixer to combine cake mix, oil, pineapple juice, and eggs in bowl. Beat about 2 minutes. Pour batter into prepared pan. Bake for 30 to 35 minutes until a toothpick inserted in the center comes out clean (and the cake is just starting to pull away from the sides). Allow cake to start to cool in the pan while making glaze.

### Glaze:

In sauce pan, combine powdered sugar, pineapple juice, and butter. Cook over medium-low heat until butter has melted, stirring frequently. Use a skewer or toothpick to poke holes in the cake. Pour all warm glaze over cake while it's still in the cake pan. Allow cake to cool for 20 more minutes, then invert onto serving platter. Allow to completely cool before serving.

### *-From the kitchen of Anita Shepherd*

Each month, our newsletter features recipes submitted by our members. If you have a favorite recipe and would like to share it with other readers in the Altamaha EMC service area, send a copy, complete with name, address and daytime phone number to: Tammye Vaughn, Altamaha EMC, P.O. Box 346, Lyons, GA 30436. Each month, a recipe will be selected for publication. The member who submitted the featured recipe will be given a \$10 credit on their next Altamaha EMC bill. Due to limited space, not all recipes received will be featured. Recipes printed in *Plugged In* are not independently tested; therefore, we must depend on the accuracy of those members who send recipes to us.