



Plugged in to Altamaha EMC

OCTOBER 2019

The Official Newsletter of Altamaha Electric Membership Corporation

Serving: Toombs, Montgomery, Emanuel, Treutlen, Laurens, Johnson and Tattnall

By the Community, for the Community October is National Co-op Month

When you think of October, pumpkins, Halloween and beautiful fall foliage naturally come to mind. But October is notable for another reason – it's National Co-op Month! This is the time of year when cooperatives across the country, including Altamaha EMC, celebrate who we are and more importantly, the members we serve.

Cooperatives are different than other types of businesses. When the market declines to offer a product or service, or does so at a very high price, co-ops intervene to fill the need. Similar to how Altamaha EMC was built by members who came together to bring electricity to our community, cooperatives are conveners for the common good. Your electric co-op exists to provide safe, reliable and affordable energy to you, the members of the co-op. Equally important is our mission to enrich the lives of the members we serve.

As a co-op, we are well-suited to meet the needs of the community because we are locally governed. Altamaha EMC's leadership team and employees live right here in the community. Our board of directors, who helps set long-term priorities for the co-op, live locally on co-op lines. These board members have been elected to the position by neighbors like you.

We know our members (that's you!) have a valuable perspective. That's why we are continually seeking your input. Whether through community events, our social media channels or the annual meeting, we want to hear from you.

Our close connection to the community ensures we get a first-hand perspective on local priorities, thereby enabling us to make more informed decisions on long-term investments, such as high-speed broadband, community solar programs, equipment and technology upgrades and electric vehicle programs.

Another feature that sets our co-op apart from a traditional utility is one of our core principles, "Concern for Community." We partner with local organizations

like city and county governments, development authorities and chambers of commerce to promote economic development and recruit new businesses and industries. We offer free educational and safety programs in our local schools. Through the generous donations of our members, we administer the Operation



Our goal is to efficiently deliver affordable, reliable and safe energy. Because we know you're counting on us.

Round Up program which benefits charitable/non-profit organizations and schools in our service area. We participate in the Electric Cooperative Youth Tour, where we take our community's brightest young people to Washington, D.C. for a week-long immersion to experience democracy in action.

Ultimately, the larger community benefits from these programs because of you and your neighbors. You empower the co-op through your membership and through your participation in and support of these programs.

We hope you think of Altamaha EMC as more than your energy provider, but instead as a local business that supports this community and powers economic development and prosperity for the people. We will continue to learn from our members about their priorities so that we can better serve you – because your electric co-op was built *by the community, for the community*.

National Farmer's Day is October 12

National Farmer's Day is observed annually on October 12th as a day to pay tribute to all farmers. The profession of farming began around 12,000 years ago with the domestication of livestock as hunters/gatherers settled down and started to plant their own food. In short, farming is one of the oldest jobs around.

Let's take a moment on October 12 to show our thanks to all the farmers who work tirelessly to grow our food.



Here are a few celebration ideas:

- **Go to a farmers market** - Support local farmers by shopping at a Farmer's Market in your area. Keep in mind that by shopping with small businesses, you are helping that entrepreneur pay for his or her daughter's dance recitals, family vacations, or helping their business expand. By supporting the little guys, you are helping their dream stay alive.
- **Plant a garden** - What better way to celebrate National Farmer's Day than by becoming your own farmer and planting your own garden! Think how awesome it would be to have your favorite fruits and veggies growing in your backyard. Studies show that only 2% of Americans grow their own food.
- **Thank a farmer** for the hard work they do to supply us with food. Post a thank you note on social media using the hashtag #NationalFarmersDay.

The endless hard work that farmers do each day has always been an example to all of us. On National Farmer's Day, we thank them for their contribution to our economy.

Energy Efficiency Tip of the Month

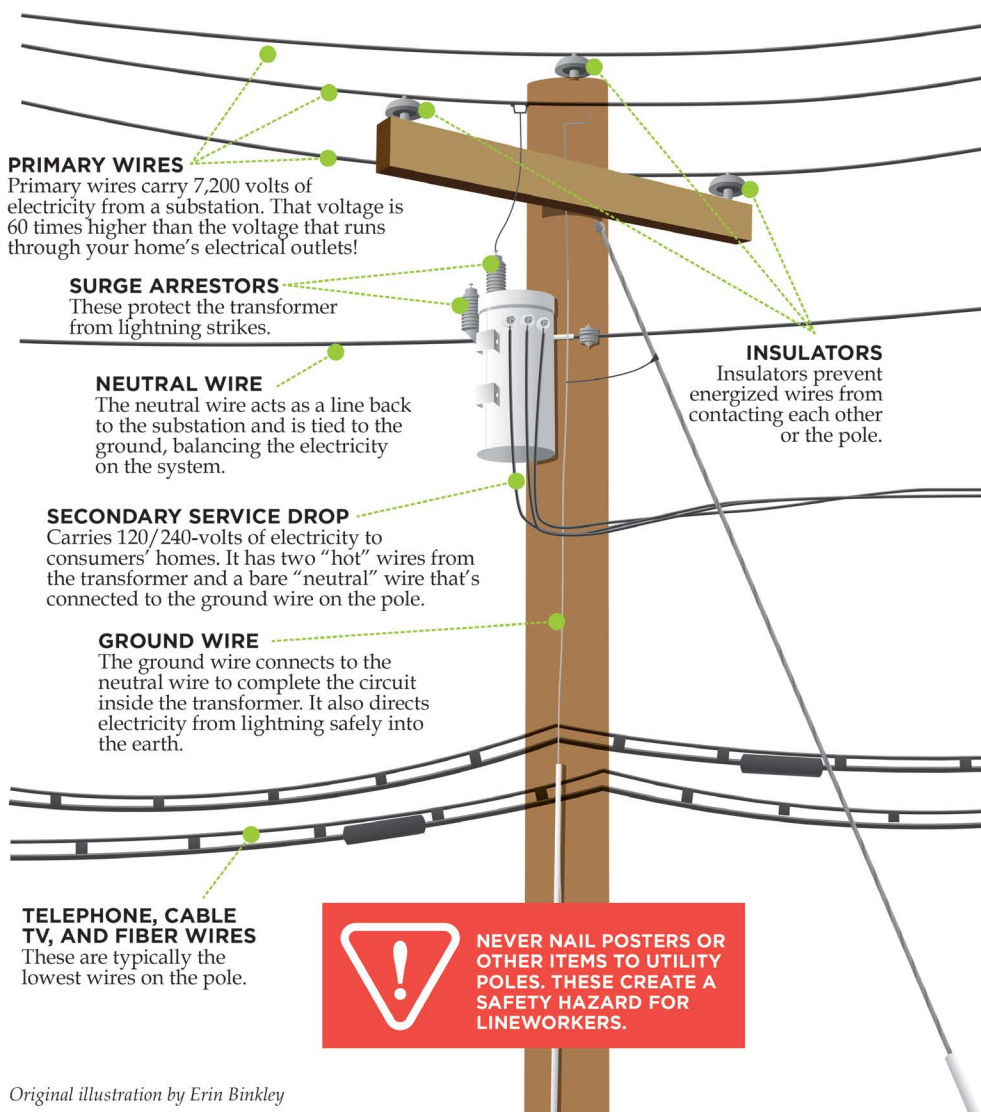
Heating requires more energy than any other system in your home, typically making up about 42% of your energy bill. With proper equipment maintenance and upgrades like additional insulation and air sealing, you can save about 30% on your energy bill.

Source: energy.gov



WHAT'S ON THAT POLE?

This illustration shows the basic equipment found on electric utility poles. The equipment varies according to the location and the service they provide.



Original illustration by Erin Binkley

Scholarship Applications Now Available

Altamaha EMC is currently accepting applications for the Walter Harrison Scholarship, a program sponsored by Georgia's electric cooperatives.

The \$1,000 scholarship can be applied to academic expenses at any accredited two- or four-year university, college or vocational-technical institute in Georgia. Factors for consideration include grade point average, SAT scores, academic standing, scholastic honors, and financial need. A scholarship committee comprised of EMC directors and managers selects students who exceed in these areas and who struggle with college expenses. Eleven scholarships will be awarded statewide in early spring of 2020.

Students who apply for the scholarship must be accepted or enrolled in an accredited

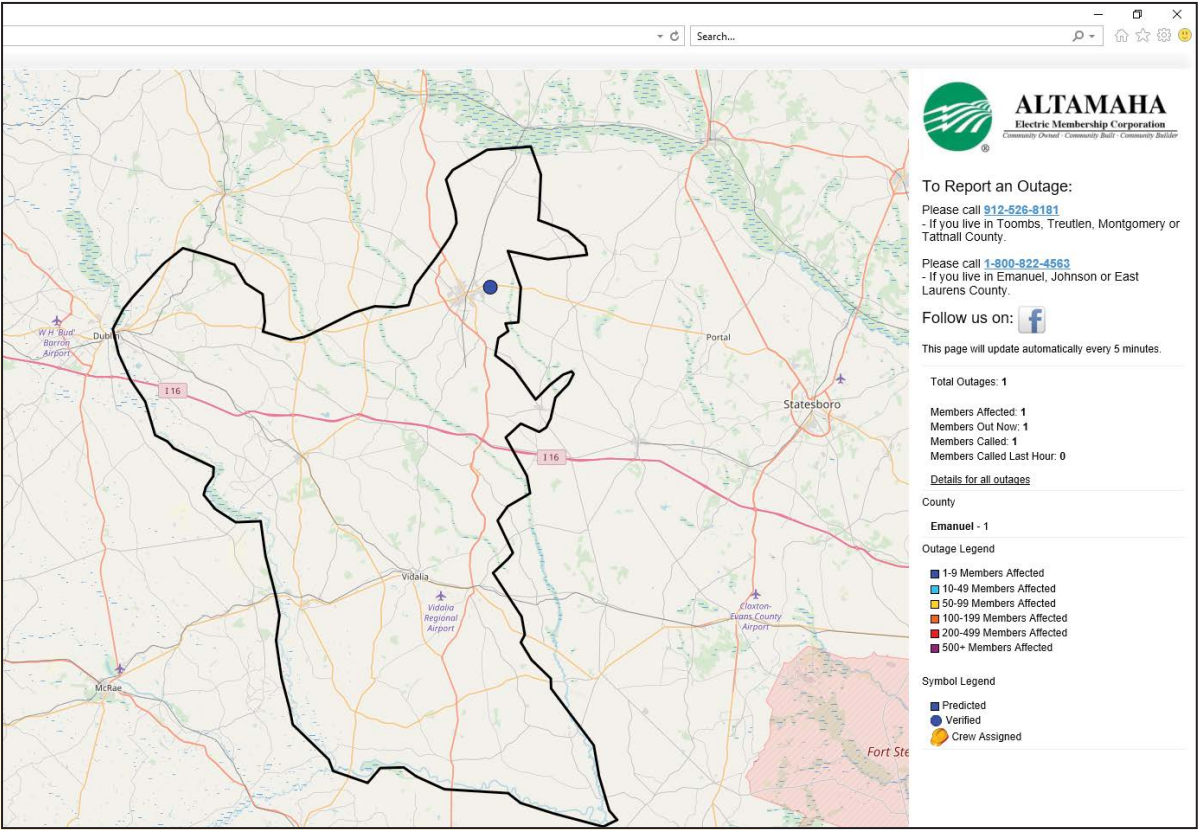
undergraduate degree program. They also must complete an application and write a biographical sketch which provides a preview of his or her future plans.

Created in 1985 by the board of directors of Georgia EMC, the scholarship pays tribute to the late Walter Harrison, a pioneer in the rural electricity movement and a leader at local, state and national levels in the electric cooperative program. Since 1985, Georgia's electric cooperatives have awarded more than \$210,000 to students via the Walter Harrison Scholarship program.

Applications are available for download on our website. You can also request an application by contacting Tammye Vaughn at 912-526-2120 or via email at tammye.vaughn@altamahaemc.com. Completed applications are due by January 31, 2020.

Outage Map Now Available

At Altamaha EMC we continually work towards improving our service to you, our valued members. We are pleased to announce that you can now view outages using our new outage map system. The outage map can be viewed on our website at www.altamahaemc.com or from our mobile app. Always report all power outages by calling 912-526-8181. Stay away from downed power lines.



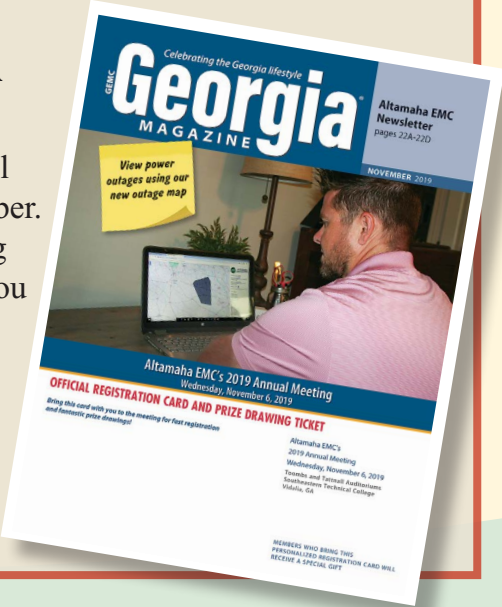
Mark Your Calendars

Altamaha EMC Annual Meeting of the Members

Wednesday, November 6, 2019 • 2:30 PM
Southeastern Technical College • Vidalia, GA

Your complimentary copy of *Georgia Magazine* will arrive in your mailbox during the last week of October. This magazine will have a special cover wrap giving you all the details of the annual meeting. Be sure you remove the registration card and door prize ticket from the front cover and bring it with you to the annual meeting.

We look forward to seeing you there!





Member **RECIPES**



Autumn Apple Salad



Ingredients:

4 Granny Smith apples, cored, chopped
1/4 cup blanched, slivered almonds, toasted
1/4 cup dried cranberries
1/4 cup chopped, dried cherries
1 (8-ounce) container vanilla low-fat yogurt
or Greek yogurt

Directions:

In a medium bowl, stir together all ingredients until coated with yogurt. Serves 4.

Visit Georgia Grown's website,
www.georgiagrown.com, for more
great recipes from farms and
producers across our state.

Each month, our newsletter features recipes submitted by our members. If you have a favorite recipe and would like to share it with other readers in the Altamaha EMC service area, send a copy, complete with name, address and daytime phone number to: Tammye Vaughn, Altamaha EMC, P.O. Box 346, Lyons, GA 30436. Each month, a recipe will be selected for publication. The member who submitted the featured recipe will be given a \$10 credit on their next Altamaha EMC bill. Due to limited space, not all recipes received will be featured. Recipes printed in *Plugged In* are not independently tested; therefore, we must depend on the accuracy of those members who send recipes to us.