



PLUGGED

Serving:

Toombs, Montgomery,
Emanuel, Treutlen, Laurens,
Johnson and Tattnall

IN to Altamaha EMC



The Official Newsletter of Altamaha Electric Membership Corporation

Volume 11, Number 3

Lyons, Georgia

October 2010

Dotson Appointed as Altamaha EMC General Manager

*D*uring their July meeting, the Altamaha EMC Board of Directors appointed Romanous Dotson as the General Manager. No stranger to the electric cooperative industry, Dotson has been with Altamaha EMC for 36 years.

After graduating from South Georgia Technical School in 1973 with an Associate's Degree in Electrical Technology, Dotson worked with Lanier Electronics in Thomaston, GA. He was hired by Altamaha EMC in 1974. He worked as a lineman until he was injured in an electrical accident in 1980. Due to injuries from the accident, he was forced to take an extended leave of absence. During this time, he returned to college and earned a Bachelor of Science Degree. Upon returning to work in 1983, he became part of the office staff. Dotson has worked in many different positions with Altamaha EMC including the operations department and engineering. He was later promoted to Administrative Assistant and then to Assistant Manager.



Born and raised in Toombs County, Dotson is one of 7 children of the late Zechariah and Mildred Dotson. Dotson and his wife, Deborah, live in the Johnson Corner Community. They have two daughters, Angel and April. They are members of the Oaks Baptist Church in Lyons.

Robert Youmans, President of the Board, commented on Dotson's promotion saying, "The Board of Directors is pleased to have someone as experienced as Romanous to fill the position of General Manager. We have every confidence that he will continue to ensure that our members have safe, affordable and reliable power."

Visit Us Online

Are you taking advantage of Altamaha EMC's website? If not, there's no better time than right now. Over the past months, Altamaha EMC's website, www.altamahaemc.com, has gone through a major redesign. The site has an all-new look that makes navigating through the site a breeze. The new content is designed to help you manage your energy use, pay your bill and stay up-to-date on important events happening at Altamaha EMC. Our goal is to provide valuable information online that will help our members find answers to their questions without having to pick up the phone.

The most used feature of our website is the "Pay Your Bill" feature. It is easy and simple to use. Just click on the "Pay Online" link at the top of the home page. If you have already created an account profile and password, it will still work on the new site. If you need help creating a log-in and password, please give us a call.

Back issues of our monthly newsletter are available on the website.



We encourage you to check out the new site and give us your feedback using the "Contact Us" page. Send an email to our Communications Specialist, Tammye Vaughn, and let us know what you think about the new website.

Visit us at www.altamahaemc.com and check out our new look!



In order to meet the needs of our members in Treutlen and Laurens Counties, we are opening a full-service office in Soperton. The office will have a drive-thru window to make paying your bill fast and easy!


The office is located at 1016 Second Street in Soperton. We will be open Monday - Friday from 8:00 am - 5:00 pm. Members will be able to pay their electric and DIRECTV bills, apply for new service or request changes to existing services.

We are working hard to have the office open by the middle of October. Be sure to check our website at www.altamahaemc.com for the grand opening date.

Soperton Office Opening Soon

Effective November 1, 2010 we will no longer be accepting payments at Colony Bank, Morris State Bank and Capital City Bank. If you normally pay your electric bill and one of these locations, we invite you to use the convenience of our new Soperton office.





Altamaha EMC has stand-by personnel on duty 24 hours a day, seven days a week. In the event of a power outage or other related emergency, you can contact us at the numbers below:

If you live in the Toombs, Treutlen, Montgomery or Tattnall area:

912-526-8181

If you live in the Emanuel, Johnson or East Laurens area:

1-800-822-4563

When calling after hours, your call will be answered by our automated system. Please listen carefully and follow the prompts to report your outage or emergency.

If you have trouble reporting your outage at the number listed above, you can also call any of the following numbers:

912-565-7480

912-526-8891

912-583-2487

912-537-9929

912-557-6688

912-537-1112

912-537-2032

912-594-6609

912-526-8967

New! **LOCK IN YOUR savings for 2 years!**

Save \$29/mo.
IN 1st YEAR
AND
Save \$14/mo.
IN 2nd YEAR

NOW GET OVER
150
CHANNELS

NOW FOR ONLY
\$29.99
for 12 months*
with rebate
The CHOICE™ Package

BONUS!
Act now and
save for 2 years!



local channels included†
CBS, NBC, FOX, PBS, CW
And many more of your favorite independent channels in select markets



*Prices include a \$24 bill credit for 12 months after rebate, plus an additional \$5 with online rebate and consent to email alerts. With agreement**. In months 13-24, bill credit will be \$14/mo. †Eligibility based on ZIP code.

\$34.99*
A MONTH
After Rebate

OVER 210 CHANNELS
The CHOICE XTRA™ Package
SAVE \$29/MO. in 1st year!
AND \$14/MO. in 2nd year!



FREE starz + SHOWTIME
FOR 3 MONTHS

FREE PROFESSIONAL
INSTALLATION
in up to 4 rooms

2 FREE
UPGRADES

HD DVR &
HD RECEIVER. **\$298**
value!
With agreement**

Switch and save today!

ALTAMAHA EMC

912-526-8181

Authorized DIRECTV Dealer | Your Local Authorized DIRECTV Dealer



Offers extended to 7/27/10. Credit card required (except in MA & PA). New approved customers only (lease required, must maintain programming, DVR and HD Access). Hardware available separately. Lease fee \$5.00/mo. for second and each additional receiver. \$19.95 Handling & Delivery fee may apply. Applicable use tax adjustment may apply on the retail value of the installation.

**LEASE AGREEMENT: Purchase of 24 consecutive months of any DIRECTV base programming package (\$29.99/mo. or above) or qualifying international services bundle required. FAILURE TO ACTIVATE IN ACCORDANCE WITH THE EQUIPMENT LEASE ADDENDUM MAY RESULT IN A CHARGE OF \$150 PER RECEIVER. IF SERVICE IS TERMINATED EARLY, A CANCELLATION FEE OF \$20/MONTH REMAINING WILL APPLY. ALL EQUIPMENT IS LEASED AND MUST BE RETURNED TO DIRECTV UPON CANCELLATION, OR UNRETURNED EQUIPMENT FEES APPLY. VISIT directv.com OR CALL 1-800-DIRECTV FOR DETAILS. INSTANT REBATE: Second advanced receiver offer for qualified customers only who select an HD DVR or HD Receiver as the first free receiver upgrade. Advanced receiver instant rebate requires activation of the CHOICE XTRA package or above; MAS ULTRA or above (or for DVR receiver, OPTIMO MAS Package or above); JadeWorld; or any qualifying international service bundle, which shall include the PREFERRED CHOICE programming package (valued at \$38.99/mo.). DVR service (\$7/mo.) required for DVR and HD DVR lease. HD Access fee (\$10/mo.) required for HD and HD DVR lease. LIMIT TWO ADVANCED RECEIVER REBATES PER DIRECTV ACCOUNT. INSTALLATION: Next Day installation based on availability. Standard professional installation only. Custom installation extra.

*BILL CREDIT/PROGRAMMING OFFER: Free SHOWTIME for 3 months, a value of \$38.97. Free Starz and SHOWTIME for 3 months, a value of \$72. LIMIT ONE PROGRAMMING OFFER PER ACCOUNT. Featured package names and prices: CHOICE XTRA \$43.99/mo. Upon DIRECTV System activation, customer will receive redemption instructions (included in customer's first DIRECTV bill, a separate mailing, or, in the state of New York, from retailer) and must comply with the terms of the instructions. Prices reflect a \$29/mo. bill credit for first 12 months then bill credit amount will change to \$14/mo. in months 13-24. In order to receive full \$29 credit in first 12 months, customer must submit rebate online and consent to email alerts prior to rebate redemption. Online redemption requires valid email address. Rebate begins 4-8 weeks after receipt of rebate submission online or by phone. Timing of promotional price depends on redemption date. Account must be in "good standing," as determined by DIRECTV in its sole discretion, to remain eligible. IF BY THE END OF PROMOTIONAL PRICE PERIOD(S), CUSTOMER DOES NOT CONTACT DIRECTV TO CHANGE SERVICE THEN ALL SERVICES WILL AUTOMATICALLY CONTINUE AT THE THEN-PREVALING RATES INCLUDING THE \$5/MO. LEASE FEE FOR THE 2ND AND EACH ADDITIONAL RECEIVER. DIRECTV System has a feature which restricts access to channels. In certain markets, programming/pricing may vary.

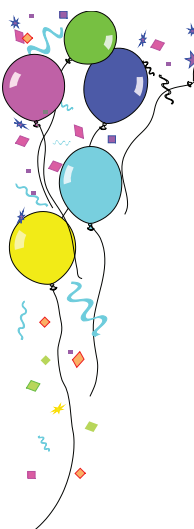
To access DIRECTV HD programming, HD Access fee (\$10/mo.) and HD equipment required. Local channel eligibility based on service address. Programming, pricing, terms and conditions subject to change at any time. Pricing residential. Taxes not included. Receipt of DIRECTV programming subject to DIRECTV Customer Agreement; copy provided at directv.com/legal and in first bill. ©2010 DIRECTV, Inc. DIRECTV and the Cyclone Design logo and CHOICE XTRA are trademarks of DIRECTV, Inc. All other trademarks and service marks are the property of their respective owners.



**While you're changing batteries,
remember to check the thermostat**

You know you need to change the batteries in your home's smoke alarms and carbon monoxide detectors at least once a year. Many homeowners make the change when they move their clocks ahead or back, and daylight saving time ends Nov. 7. While you've got the batteries out, replace the ones that power your digital thermostat.

Even if the batteries aren't dead, change them at least once a year. This will make it less likely that your thermostat will stop working in the middle of a cold snap while you're away for the day.



**Altamaha EMC
Annual Meeting**

**Wednesday, November 3, 2010
Southeastern Technical College
Vidalia, GA
2:30 PM**





Member **RECIPES**



Candy Corn Balls

Ingredients:

12 cups popped popcorn
1 1/2 cups candy corn
3/4 cup brown sugar
3/4 cup corn syrup
6 tablespoons butter
1/2 teaspoon salt



Put 12 cups popped popcorn in a mixing bowl large enough to allow for stirring. Mix in 1 1/2 cups candy corn. Fill a medium-size bowl with ice water and set out a cookie sheet or a piece of waxed paper. Mix 3/4 cup brown sugar, 3/4 cup corn syrup, 6 tablespoons butter, and 1/2 teaspoon salt in a 4-quart pot. Bring to a simmer over medium-high heat, stirring constantly. Stop stirring and let the syrup boil until an inserted candy thermometer reaches 275° (a parent's job). Carefully pour the syrup over the popcorn and stir well with a wooden spoon to evenly coat the kernels and candy. Cool slightly. Quickly dip your hands into the ice water and shape the popcorn into 3-inch balls. Place on waxed paper to cool completely. Tightly wrap the balls individually in plastic. Makes 18 to 24.

This is a fun recipe that kids will enjoy, but make sure they have adult supervision. While boiling the syrup is a job for adults only, shaping the balls is a fun activity for little hands.

Each month, our newsletter features recipes submitted by our members. If you have a favorite recipe and would like to share it with other readers in the Altamaha EMC service area, send a copy, complete with name, address and daytime phone number to: Tammye Vaughn, Altamaha EMC, P.O. Box 346, Lyons, GA 30436. Each month, a recipe will be selected for publication. The member who submitted the featured recipe will be given a \$10 credit on their next Altamaha EMC bill. Due to limited space, not all recipes received will be featured. Recipes printed in *Plugged In* are not independently tested; therefore, we must depend on the accuracy of those members who send recipes to us.